

RHEOLYSE®

INVISIBLE PURE



Invisible Excellence

The most advanced result is not an addition of volume, but the preservation of authenticity and the dynamic anatomy of every face.



The Science of Naturalness

Excellence, in an aesthetic approach oriented toward natural results, is expressed through imperceptibility: the most advanced outcome is not the addition of volume, but the preservation of authenticity and dynamic facial anatomy.

From this vision comes Aesthemed, an Italian brand specialized in the development of hyaluronic acid-based fillers. Each formulation is designed to achieve natural-looking results through a scientific approach based on rheology: clinical outcomes are determined not by the quantity of product injected, but by its behavior within the tissues.

Aesthemed's research takes shape in Rheolyse, a line developed to translate rheological science into predictable clinical performance. A formulation system designed to harmonize with different anatomical compartments while respecting structure, dynamics, and facial expressiveness.

Rheolyse is structured into two complementary lines, created to address different clinical needs while sharing the same design principle: selecting the product's behavior before volume, in order to preserve balance, harmony, and naturalness.

Rheolyse

The objective of Rheolyse is to intervene with precision, guiding anatomical balance through a scientific approach focused on natural outcomes. Each formulation is developed starting from rheological parameters- G' , G'' , $\tan \delta$ - to ensure a response consistent with the treated plane, while respecting tissue structure and dynamics.

For Rheolyse, excellence lies in the coherence between rheological design, clinical outcome, and facial identity.

RHEOLYSE

Invisible Linked

Four formulations (Hydrafine, Sublimelip, Dynamic, Deeplift) designed for harmonious integration across different anatomical planes, featuring a rheological profile oriented toward naturalness and dynamic control.

Developed to accompany movement and expressiveness, these products promote tissue continuity and proportional balance, maintaining coherence between structure and function.

RHEOLYSE

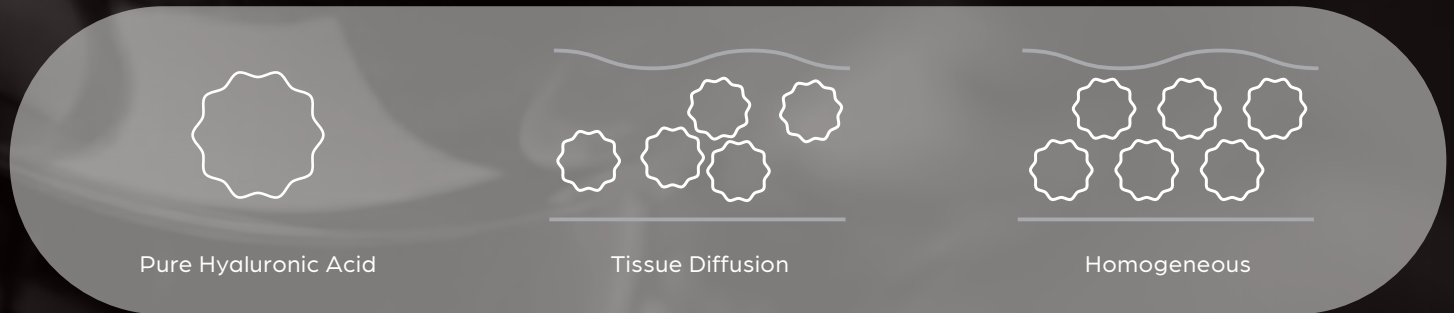
Invisible Pure

Two formulations (Puresense 64 and Restore 32) based on pure hyaluronic acid, developed to provide structural response and precision in treatments requiring greater support.

High purity and controlled mechanical behavior enable accurate outcome control in anatomical planes with higher functional demands, while respecting facial morphology.

Parameters

The Rheolyse Invisible Pure line uses pure hyaluronic acid, linear and non cross-linked, as its formulation base, following a rationale oriented toward tissue physiology. The treatment is integrated into a progressive clinical protocol in which respect for biological timing represents a determining therapeutic factor.



Pure Hyaluronic Acid

The Rheolyse Invisible Pure line is formulated with pure, linear, non cross-linked hyaluronic acid obtained through bacterial fermentation, ensuring a physiological approach to facial and body treatments.

This formulation choice allows:

- homogeneous diffusion within tissues
- high tissue integration
- progressive stimulation without rigidity or alteration of morphology

Concentration modulates the clinical behavior of the product according to the anatomical plane and therapeutic objective.

Treatment Protocol

Rheolyse products are integrated into a structured clinical pathway in which timing represents an essential therapeutic factor.

Pure hyaluronic acid acts according to the biological rhythms of the tissue. For this reason, clinical efficacy requires:

- respect for appropriate intervals between sessions
- continuity of treatment
- coherent protocol planning

Each session contributes to building a progressive and stable response.

Unscheduled variation of treatment intervals reduces the quality of the biological response.

ÆSTHEMED



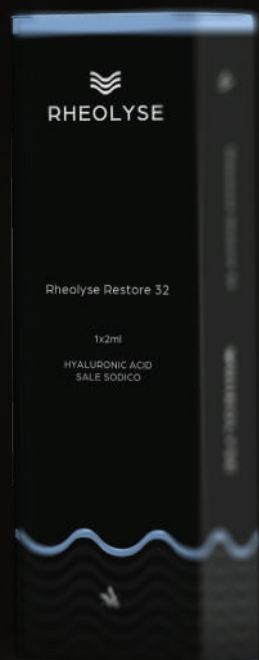
Scan the QR code to explore the applied anatomy

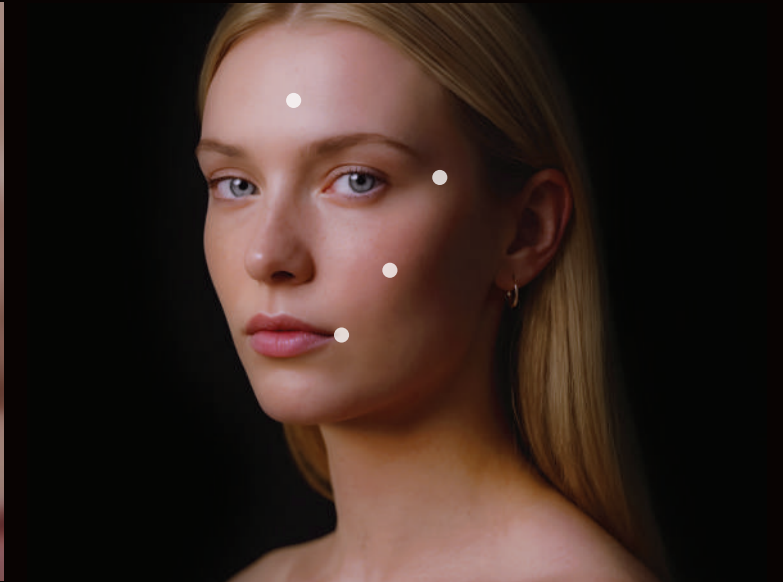
FRONTAL AREA

PERIOCULAR AREA

CHEEK AREA

PERIORAL AREA





Restore 32

Resorbable medical device indicated for skin hydration and correction of superficial cutaneous imperfections of the face and body. It acts at the dermal level, promoting restoration of skin function and supporting dermal repair processes, with progressive improvement in overall skin quality. Formulated as a sterile, apyrogenic, physiological gel based on non-animal origin sodium hyaluronate produced through bacterial fermentation.

Dermal hydration

Skin repair

Tissue quality improvement

Frontal
area

Periocular
area

Cheek
area

Perioral
area

_1

Hyaluronic Acid

32 mg/2 g

Composition

Sodium hyaluronate 32 mg/2 g

Phosphate buffer, sodium chloride, water
for injectable solutions q.s. to 2 g

Packaging 1x2 ml

2 needles – 30 G x 4 mm

Adhesive labels

Anatomical Planes

Forehead

Periocular area

Cheeks

_2

Neck and décolleté

Perioral area

Maintenance Protocol

2nd session: 15 days after the 1st session

3rd session: 45 days after the 2nd session

Injection Technique

Intradermal microinjections (point-
by-point) at regular intervals of
approximately 1 cm

Rheological Parameters

G': 10 Pa

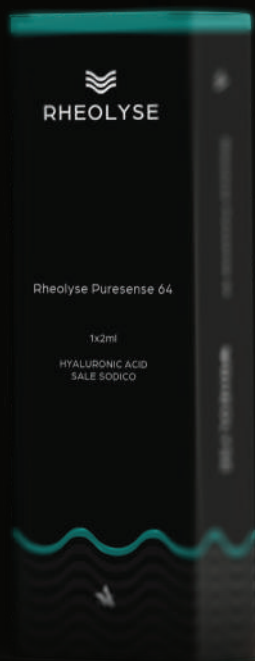
G'': 30 Pa

δ : 3,0

ÆSTHEMED



Scan the QR
code to explore
the applied
anatomy

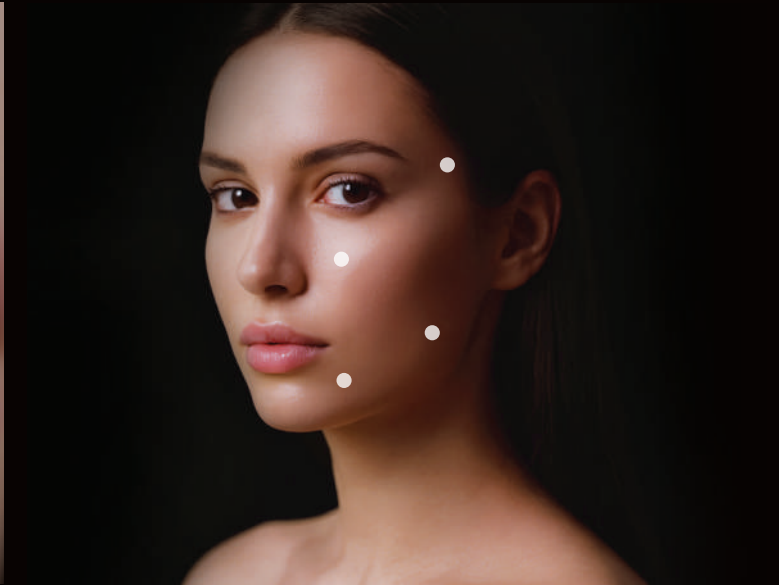


TEMPORAL AREA

ADIPOSE COMPARTMENT

MANDIBULAR ANGLE

MARIONETTE AREA



Puresense 64

Resorbable medical device indicated for the restoration of deep tissue support and improvement of skin quality in areas affected by volume loss. It acts at the hypodermal level, promoting natural projection while progressively stimulating hydration, viscoelasticity, and metabolic activity of the tissue. Formulated as a sterile, apyrogenic, physiological gel based on sodium hyaluronate, it is intended for deep adipose biostimulation.

Deep adipose activation

Three-dimensional biological scaffold

Reorganization of the dermal matrix

Temporal
area

Adipose
compartment

Mandibular
angle

Marionette
area

_1

Hyaluronic Acid

64 mg/2 g

Composition

Sodium hyaluronate 64 mg/2 g
phosphate buffer, sodium chloride, water
for injectable solutions q.s. to g

Packaging 1x2 ml

2 needles – 30 G x 13 mm
Adhesive labels

Anatomical Planes

Adipose compartment
Deep malar region
Marionette area

_2

Mandibular angle
Temporal area

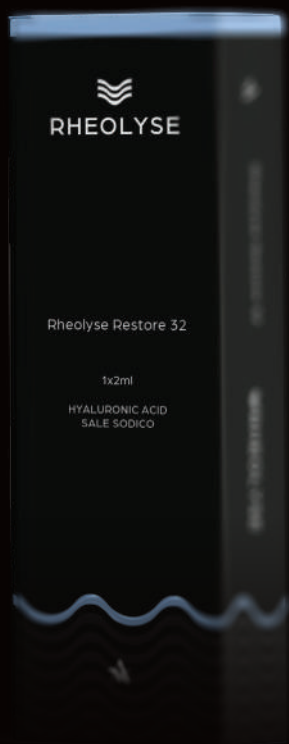
Maintenance Protocol

2nd session: 30 days after the 1st session
Maintenance: repeat treatment every 4
months

Rheological Parameters

G': 80 Pa
G'': 140 Pa
 δ : 1,75

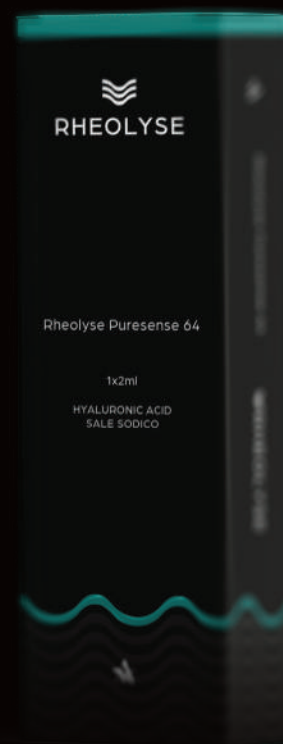
Invisible Excellence



RHEOLYSE Restore 32



Targeted dermal hydration, metabolic tissue support, and progressive improvement of elasticity and overall skin quality.



RHEOLYSE Puresense 64



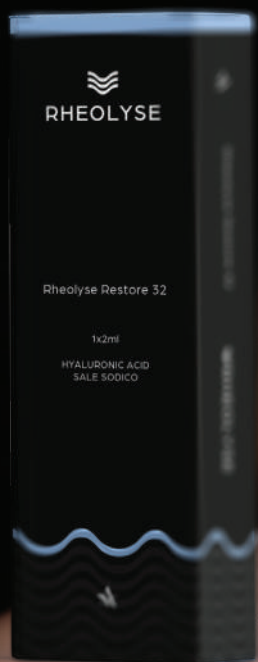
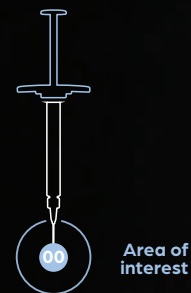
Deep restoration of hypodermal support, biological activation, and progressive enhancement of hydration, elasticity, and skin quality.





Restore 32

Product intended for use with needle



_01
FRONTAL AREA
Inject 0.05 ml per
injection point

_02
PERIOCCULAR AREA
Inject 0.05 ml per
injection point

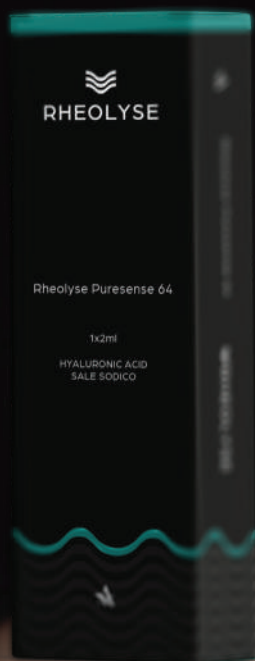
_03
CHEEK AREA
Inject 0.05 ml per
injection point

_04
PERIORAL AREA
Inject 0.05 ml per
injection point



Puresense 64

Product intended for use with needle



Area of interest



_01
TEMPORAL AREA
Inject 0.2 ml



_02
ADIPOSE COMPARTMENT
Inject 0.4 ml



_03
MANDIBULAR ANGLE
Inject 0.2 ml



_04
MARIONETTE AREA
Inject 0.2 ml



Certifications

Rheolyse operates in accordance with the highest international standards of quality, safety, and sustainability. The production system is certified under ISO 9001:2015, ISO 13485:2016 for medical devices, and ISO 14001:2015, ensuring controlled, traceable, and quality-oriented manufacturing processes.

All devices comply with applicable regulatory requirements.

Entirely manufactured in Italy, Rheolyse guarantees direct oversight of every production phase, strict process validation, advanced technological know-how, premium raw material selection, and consistent clinical reliability over time.



14001:2015

Environmental management system for quality and process control.



9001:2015

Standard for quality management systems.



13485:2016

Specific standard for the production of medical devices.



Compliance with European safety and performance requirements.



 AESTHEMED

Via San Pietro 11 | 25030 Coccaglio (BS) ITALY
info@aesthemed.it | Tel. +39 334 278 6495